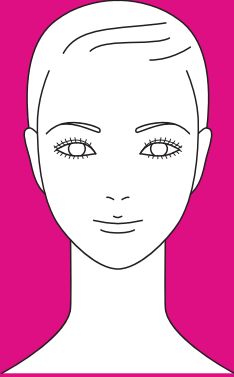




Bio-Therapeutic
Skin Care for life inside and out®

bt-micro® quick start guide

1. Read operation manual prior to using the equipment.
2. Do not use the unit if any contraindications are present.



3. Apply appropriate bt-ceuticals® product.

4. Press the **POWER** button for two to three seconds.



5. Press appropriate setting:
Once for Low, twice for High.
EXFOL to exfoliate
SERUM or **CREAM** to
apply serums or creams
CLEAR for clearing.



6. To exfoliate:
Hold unit in hand, buttons towards palm of hand, applicator end up.
Glide applicator in a gentle upward motion along the skin, wipe away residue.



7. To apply DECONGEST, serum, or creams:
Hold by the metal sides of unit, buttons away from palm of hand, applicator end down with your free hand 1 - 2 inches away from the applicator to keep skin taut. Glide applicator in an upward, gentle motion.